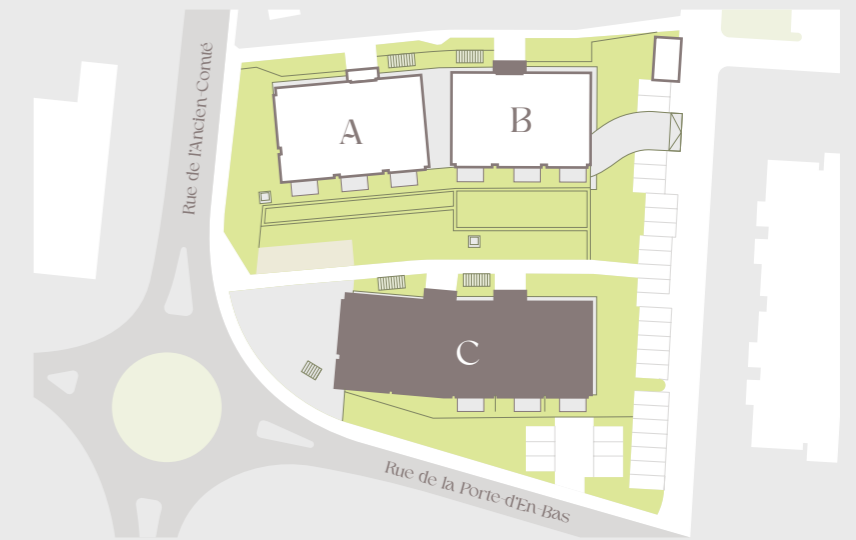


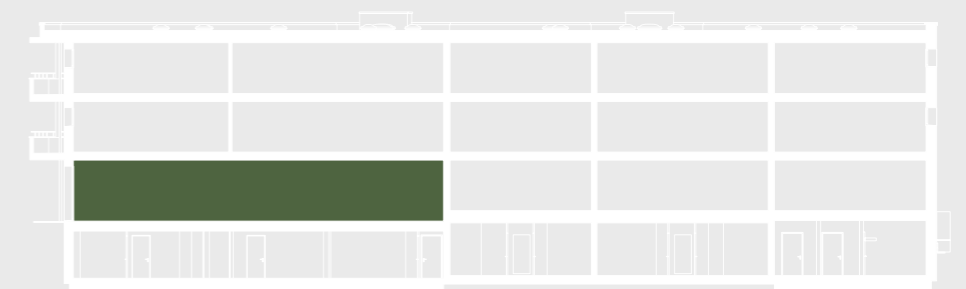
SITUATION

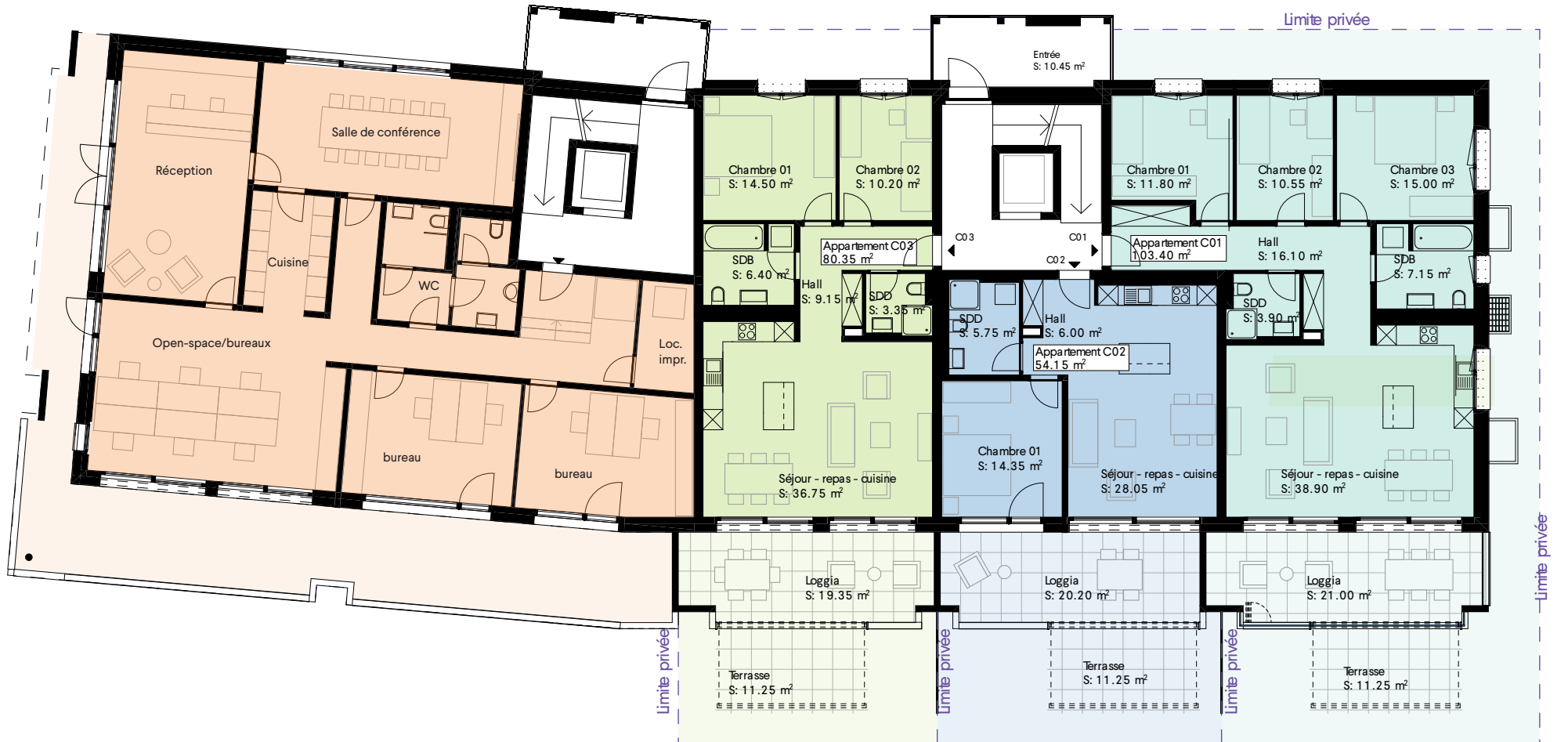


BÂTIMENT C



ÉLÉVATION





Appartement n° C03 - 3.5 pièces

surface nette int.	80.35 m ²
surface loggia	19.35 m ²
surface terrasse dallée	11.25 m ²
surface terrain privatif	17.75 m ²

Appartement n° C02 - 2.5 pièces

surface nette int.	54.15 m ²
surface loggia	20.20 m ²
surface terrasse dallée	11.25 m ²
surface terrain privatif	20.15 m ²

Appartement n° C01 - 4.5 pièces

surface nette int.	103.40 m ²
surface loggia	21.00 m ²
surface terrasse dallée	11.25 m ²
surface terrain privatif	67.20 m ²

